

Contents

Contact Details	2
Seating Capacity.....	2
Access.....	2
Stage Information & Dimensions.....	3
Stage Management	3
Dressing Rooms	3
Lighting.....	4
Sound.....	5
Other Equipment.....	5
How to Find.....	5
Appendix A – Seating Plan	7
Appendix B – Rig Plot	8
Appendix C – Stage & Auditorium Plan.....	9
Appendix D – LX & SFX set up	10

Contact Details

All queries from visiting companies or anyone wishing to hire one of our spaces should initially be directed to:

Steve Bennett, Theatre Manager info@cygnettheatre.co.uk 01392 277189

Cygnnet Theatre

Friars Gate

Exeter EX2 4AZ

www.cygnettheatre.co.uk

Seating Capacity

100 in end on position, seating can be arranged in multiple ways, but numbers are at maximum in end on.

If you require seats to be held off sale, you must notify us as far in advance as possible. We may not be able to hold seats once they are on sale. (See Appendix A for the Seating Plan).

Access

Cygnnet has two loading entrances, one accessed via Friars Gate (Double Fire exit with steps), one via Water Gate (level access) each large enough to accommodate approx. 5ft x 6ft 4 and Water Gate gives flat access to the stage via the foyer.

We cannot accommodate trailers/vans staying by the doors after the fit-up or arriving early for the get out, please call to discuss your needs for parking large vans or trailers.

Please note that access to the Stage is across the Foyer area and barriers must be in place before work commences.

Cygnnet Theatre Technical Specifications

Stage Information & Dimensions

The stage floor is flat and finished in wood. It cannot be screwed into or painted.

Height Pros 303cms

Height Grid 347cms

Height Ceiling 387cms

Width Pros 10mtrs 36cms

Setting Line to back wall Max 8mtrs

Proscenium width 42cm (U.S) 140cm(S.R/L)

Proscenium height 297cm

Front of stage (1m from audience) to back wall (with blacks in place & crossover) 6m at Max capacity, 7m at reduced capacity

Centre line to side pros 5m

NO ability for Flying

Stage Management

From the Control box

Show relay goes to all dressing rooms and corridors

You can see the whole stage from the Control Box and therefore no cameras are set up on-stage or back-stage.

Dressing Rooms

Both dressing rooms (on first floor) contain showers and desks for make-up. Lockers for personal belongings are available on request.

Dressing Room 1. Capacity 4

Dressing Room 2 Capacity 6

The upstairs studio can be booked out as a third dressing room, if necessary, with no extra cost. This can be for bigger companies, for non-binary actors or those who wish to change separately for any reason.

There is an additional room that can be booked out as a fourth dressing room (accommodating 2 persons). This must be booked in advance (and noted in this booking form) and is chargeable at £10 (due to another hire losing their space).

Cygnnet Theatre Technical Specifications

Lighting

4 x 1Kw PC (Harmony)

7 x 650w PC (Quartet)

8 x 500w Fresnel (Prelude)

12 x Pattern 23 Profile (mix of Mk1&2)

9 x 650w profile 21/36

1 x 650w Profile (Minuette)

2 x Multi Par 575 GSL

4 x 650 Fresnel GSL

6 x 500w Strand Coda

8 x Birdies

2 x 1KW Strand Profile Lanterns

1 x 24 Channel, Zero88 FLX Lighting Board

4 x 6 way dimmer pack (Strand Act6) analogue control

1 x DMX board

Patch system around edge of room 40 sockets (pre-rigged for general cover)

Scaffold grid, NOT IWB

15A Cable various lengths for additional rigging

3 x 13A-15a adapter

3 x 15A-13A adapter

15A 2 way grelcos

A selection of gobo holders for M size and B size gobos

Barn-doors for all PC and Fresnel Lanterns.

Side-lighting for Dance:

6 x Poles (with max 12 Perches): Can be set up as either 4 poles each with 3 perches or 6 poles each with two perches.

7 x Floor stands

Sound

1 x 8 Channel Sound Mixing Desk

2 x speakers

Apple Mac laptop with Q Lab (May be made available)

Other Equipment

Cyclorama & Projector

Flexible black surround:

4x 1 width x 347cm

4 x 2 drop x 347cm

2 x 3 drop x 347cm

How to Find Cygnnet

Arriving by Car

Cygnnet Theatre is located above the Quay in Friars Gate. A Sat Nav will take you directly to us. If arriving via M5 or A30, follow signs to Exeter Centre, via Topsham Road. Once you pass County Hall (Devon County Council) on the right and the new Acorn development site on the left, you will be in St Leonards, go down the crux of the hill and as you come up the other side take the exit Left. Follow the road to Friars Gate. We are visible in front of you.

Arriving by Bus

If you are arriving into the main bus station. Catch the R/S and get off at M. Sillifant and Sons Funeral, bus stop. Cross the road to the Globe Backpackers, walk past uphill and you'll find us through passageway on your left.

Arriving by Train

If you are arriving by train:

St David's

Walk east on Isambard Parade towards Bonhay Rd/A377, Turn right onto Bonhay Rd/A377, Turn left towards St. David's Hill, Turn right onto St. David's Hill, Continue onto Iron Bridge, Continue onto North St, Continue onto South St, Turn right towards Water Gate,

Cygnnet Theatre Technical Specifications

Turn left towards Water Gate, Continue onto Water Gate, Turn left onto Friars' Gate,
Turn left onto S Gate

Central: Walk south-east on Queen St towards Northernhay St, Turn right onto High St,
Turn left onto South St, Turn right towards Water Gate, Turn left towards Water Gate, Continue
onto Water Gate, Turn left onto Friars' Gate

St Thomas: Walk north-west towards Cowick St/B3212, Turn right onto Cowick St/B3212,
Continue onto Alphington St/A377, Continue onto Western Way/A3015,
Turn right towards Commercial Rd, Turn left towards Commercial Rd,
Turn right onto Commercial Rd, Turn left onto Quay Hill, Turn right towards Water Gate,
Turn right towards Water Gate, Continue onto Water Gate, Turn left onto Friars' Gate

Parking

There is no private car parking on site, but Cathedral & Quay NCP car park is a 1 min walk
and costs £11 to park all day. Sat Nav users should use 28 Lower Coombe St, Exeter EX1
1DE for Cathedral & Quay NCP.

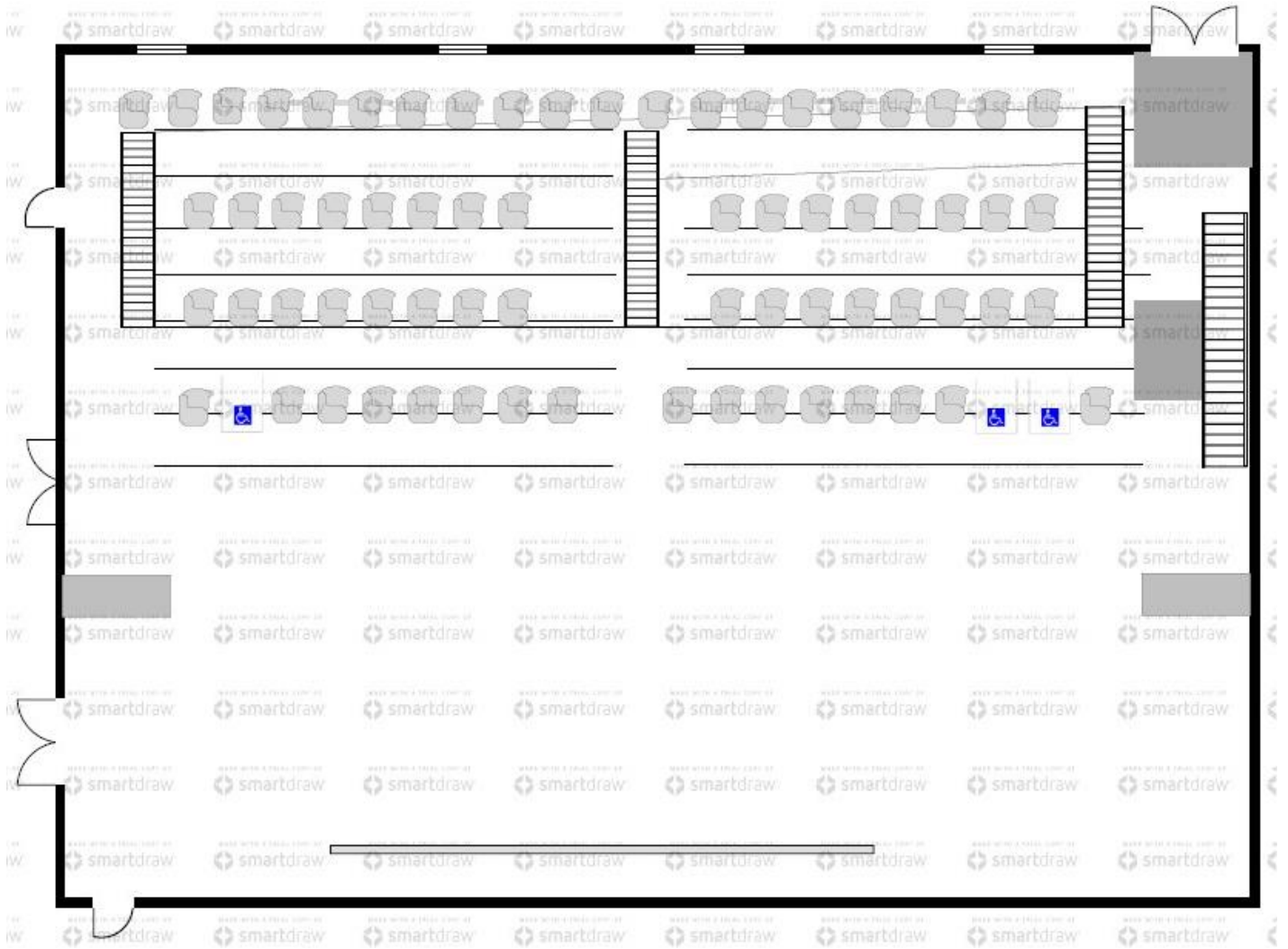
TARIFF - Up to 1 hour £2.20, 1-2 hours £3.30, 2-3 hours £4.40, 3-4 hours £5.50, 4-5
hours £6.60, All day £11.00

Loading is outside the main theatre

Appendix A

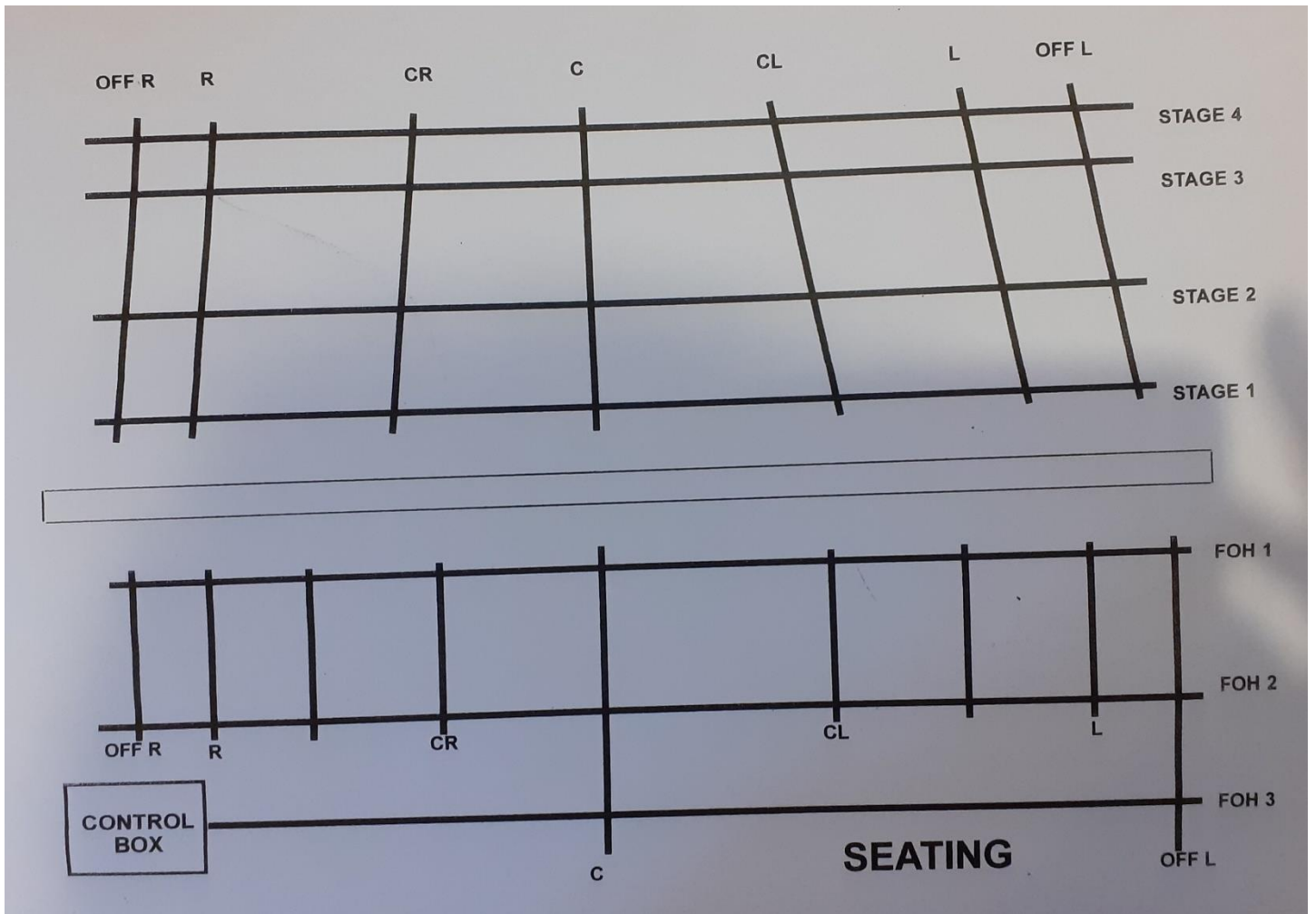
Seating Plan

Seating can be end on, thrust, round



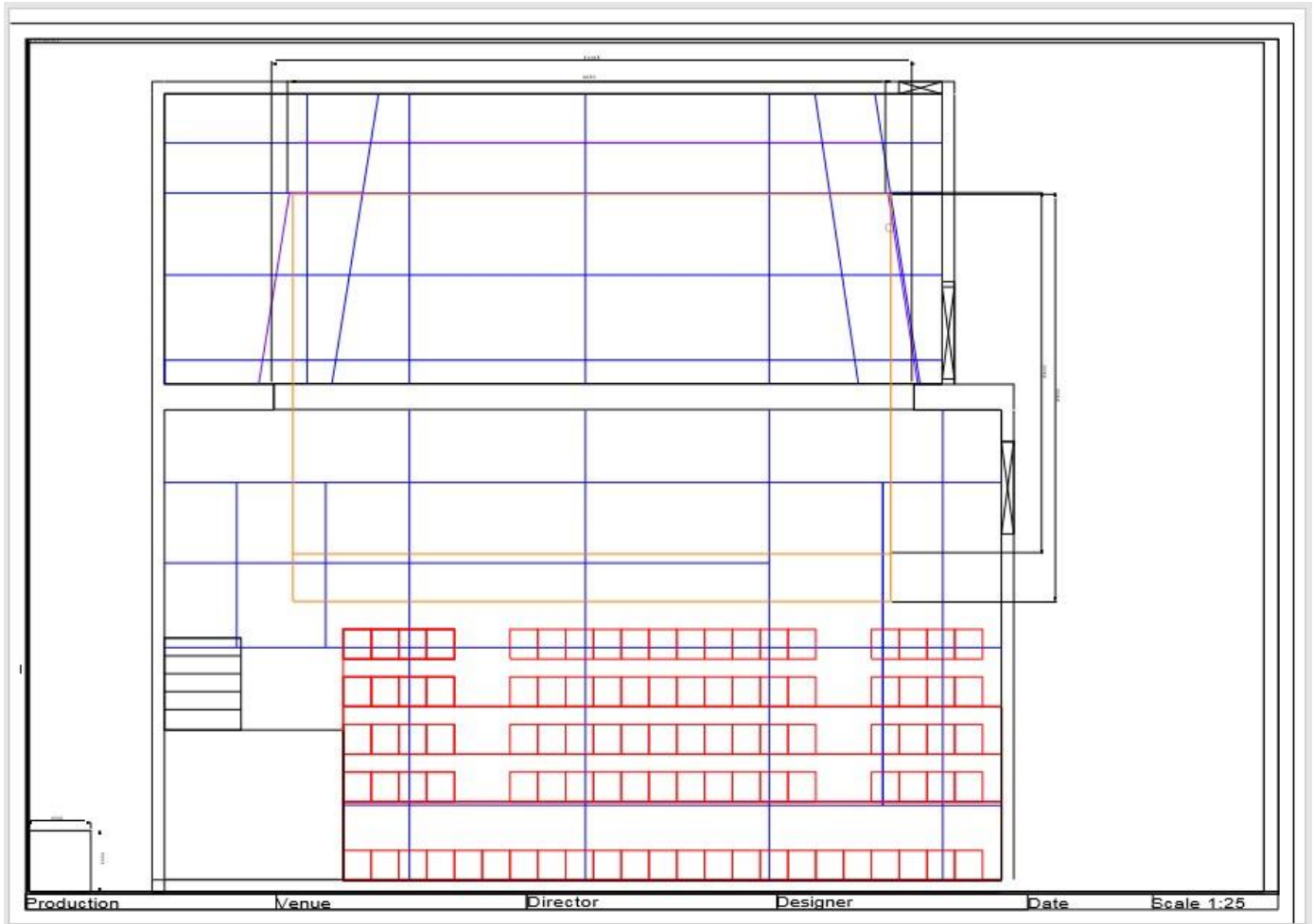
Appendix B

Blank LX Plot



Appendix C

Stage & Auditorium Plan



Appendix D

LX & SFX set up picture



LX Desk



Sound Desk



House Lights